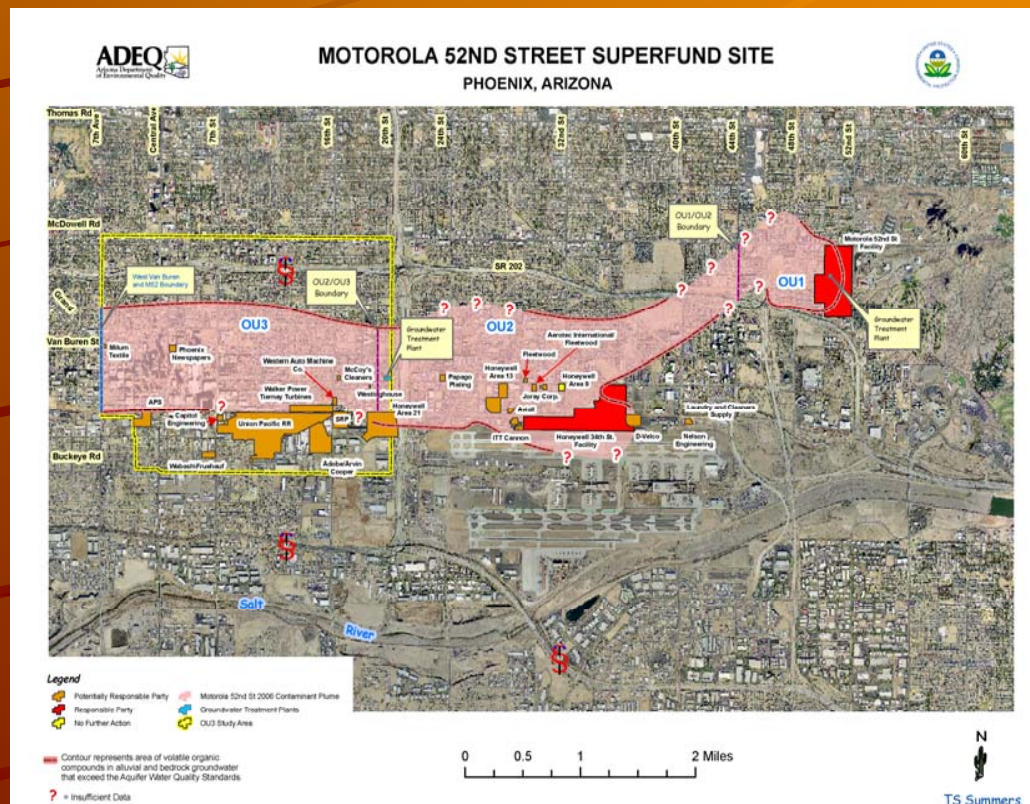


Motorola 52nd Street Superfund Site

Mary Moore
Lindon Park Neighborhood Association
Technical Assistance Grant
m.i.moore@usa.net
602-686-7267



Site Description



- ✦ OU1, OU2, OU3
- ✦ OU1
 - Fractured Bedrock Aquifer
- ✦ Well with high VOC concentrations
 - 120,000 ppb TCE
- ✦ Community Involvement with a TAG Grant
- ✦ EPA delegated Site Lead to ADEQ

Community Issues

- ◆ Wells with high TCE near residential area
- ◆ Interim remediation: Pump and Treat
- ◆ Potential DNPL onsite
- ◆ No final remedy selected after 20 years
- ◆ Freescale Semiconductor seeking Technical Impracticability Waiver (TIW)
- ◆ No Vapor Intrusion Study yet
 - Proposed almost six years ago

Community Issues

- ◆ No CAG in place now
 - Apparent unilateral CAG dissolution by ADEQ
- ◆ No ADEQ progress on the Vapor Intrusion study since last year
- ◆ TAG pick-up of Community Involvement
- ◆ State Superfund sites in the vicinity
 - Upgradient and downgradient
- ◆ A regional Flow Model developed by Weston
 - From 56th Street to 75th Avenue



Proposed New Well Locations

- ✦ New Remediation Well – Yellow Diamond
- ✦ New Monitoring Wells – Yellow Circles

Community Issues

- ✦ Bedrock Pilot Study proposed by the FreeScale to support the TIW claim at OU1
- ✦ Three wells drilled into bedrock in an area with the highest site-wide TCE concentration in a well (DM-601 located in residential area)
- ✦ Community concerns about potential vapor exposure to nearby residents and residences
- ✦ Requests from the community to FreeScale to see the Site Health and Safety Plan were unsuccessful even during on-site visit
- ✦ TAG allowed to observe on-site activities but no actual drilling was conducted during the visit
 - TAG could not confirm air monitoring activities or the scope of the Health and Safety Plan and according to Freeccale ADEQ did not request to see a HSP for the Bedrock Pilot Study

Common TAG Activities

- ✦ Hold Public Meetings around the Superfund site
- ✦ Provide educational workshops
- ✦ Invite experts for technical presentations
 - UA Superfund Program
 - EPA Scientists
 - County/City Staff
 - Concerned Citizens
 - ADEQ
- ✦ Field observational audits of GW monitoring activities