

Assessment of Vapor Intrusion at Chlorinated Solvent Sites

Case Studies in New York State

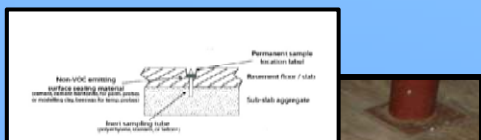
James Hayward, P.E.¹ and Robert Casey²
EA Engineering, Science, and Technology, Syracuse, NY

Introduction

EA is currently performing assessments for vapor intrusion at various sites throughout New York, in accordance with NYSDOH guidelines. The majority of the sites have been impacted to some degree by chlorinated solvents, such as those used during dry cleaner operations.



**DRY
Cleaning**



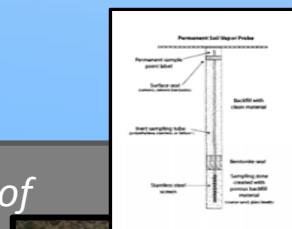
Sub-slab sample point

Field Methods

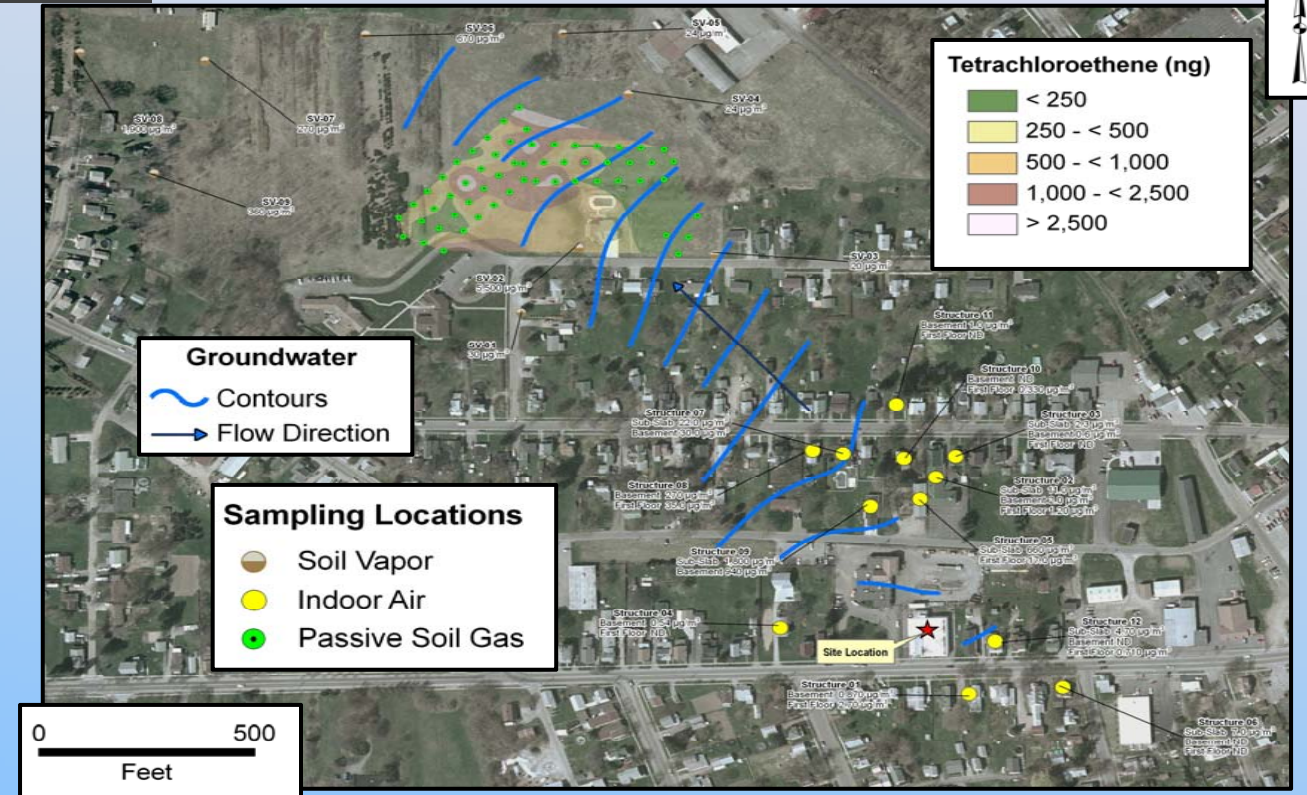


Tracer gas testing

Collection of
original
+ split
samples



Results



Lessons Learned

Field

- Home owner participation and scheduling are vital to successfully implementing a SVI evaluation.
- Identifying viable sub-slab sampling point locations provides for more sample volume and higher data precision.
- Always err on having more than less field equipment and supplies.

Lab – data interpretation

- Maintain thorough building inventories and take good pictures for aiding in laboratory data interpretation.
- Identify “hot” sample locations prior to laboratory analysis.

¹ email: jhayward@eaest.com

² email: rcasey@eaest.com

